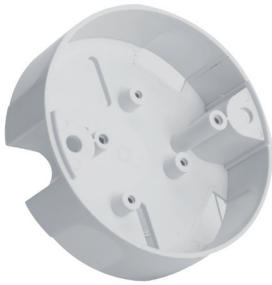


Auxiliary Devices



STD-200

Assembly supplement for the 200 detector's surface cabling. It lets you insert 4 cable pipes of 20 mm each. It is made of white ABS plastic, and fits with the Z-200 connection base.



BUD-200

Alarm buzzer for analogue detectors. This is the most suitable option for residential homes for the blind, hotel rooms and other places where people may sleep and run risk of inhaling.



PAD-10

Remote indicator with very low current consumption and great brightness. Size: 80 mm x 80 mm x 27 mm



SMD-450

Assembly supplement for the MAD-450 and PCD-100 Manual Call Point. It lets you to embed the Manual Call Point in the wall. It is made of red ABS plastic, and fits with the MAD-450 and PCD-100 Manual Call Point.



TBD-450

Cover supplement for the MAD-450 and PCD-100 Manual Call Point. It lets you to cover the Manual Call Point. It is made of transparent ABS plastic, and fits with the MAD-450 and PCD-100 Manual Call Point. Other accessories available upper request.



BOX-400

Box for modules serie MAD-400